

Offering Energy Consulting Solution

Phone: +91 8902656796
Email: info@sustiknow.com
www.sustiknow.com
Corporate Office: Kolkata
Project Office: Noida

Energy Consulting: Significance

Key Challenges in Energy Management

Inefficient Data Collection System

Balancing Cost Reduction with Operational Efficiency

High Energy Cost

Cybersecurity Risks

Regulatory Compliance

Energy Waste Management

Stakeholder Engagement

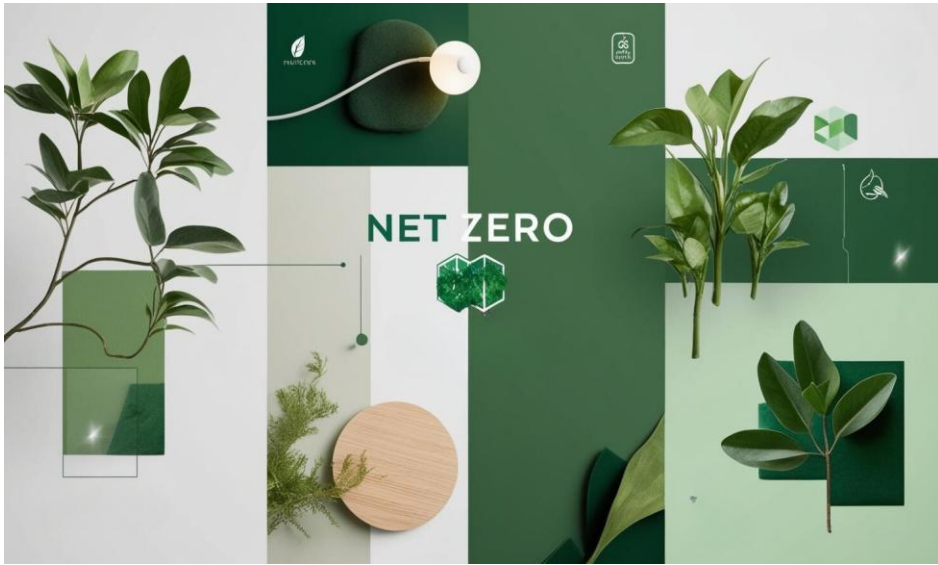
Complexity of Data Analysis

Limited Control over Energy Usage

Lack of Comprehensive Energy Management Plan



Energy Consulting: Our Solution



Preparation of Net Zero Roadmap

- Site Survey and assessment
- Detailed carbon foot printing covering Scope 1, 2 and 3
- Detailed Energy Audit
- Submitting Detailed Project Report, including necessary technical intervention, project timeline using Gantt chart and project financials
- Project Implementation including pilot testing
- Monitoring and further development

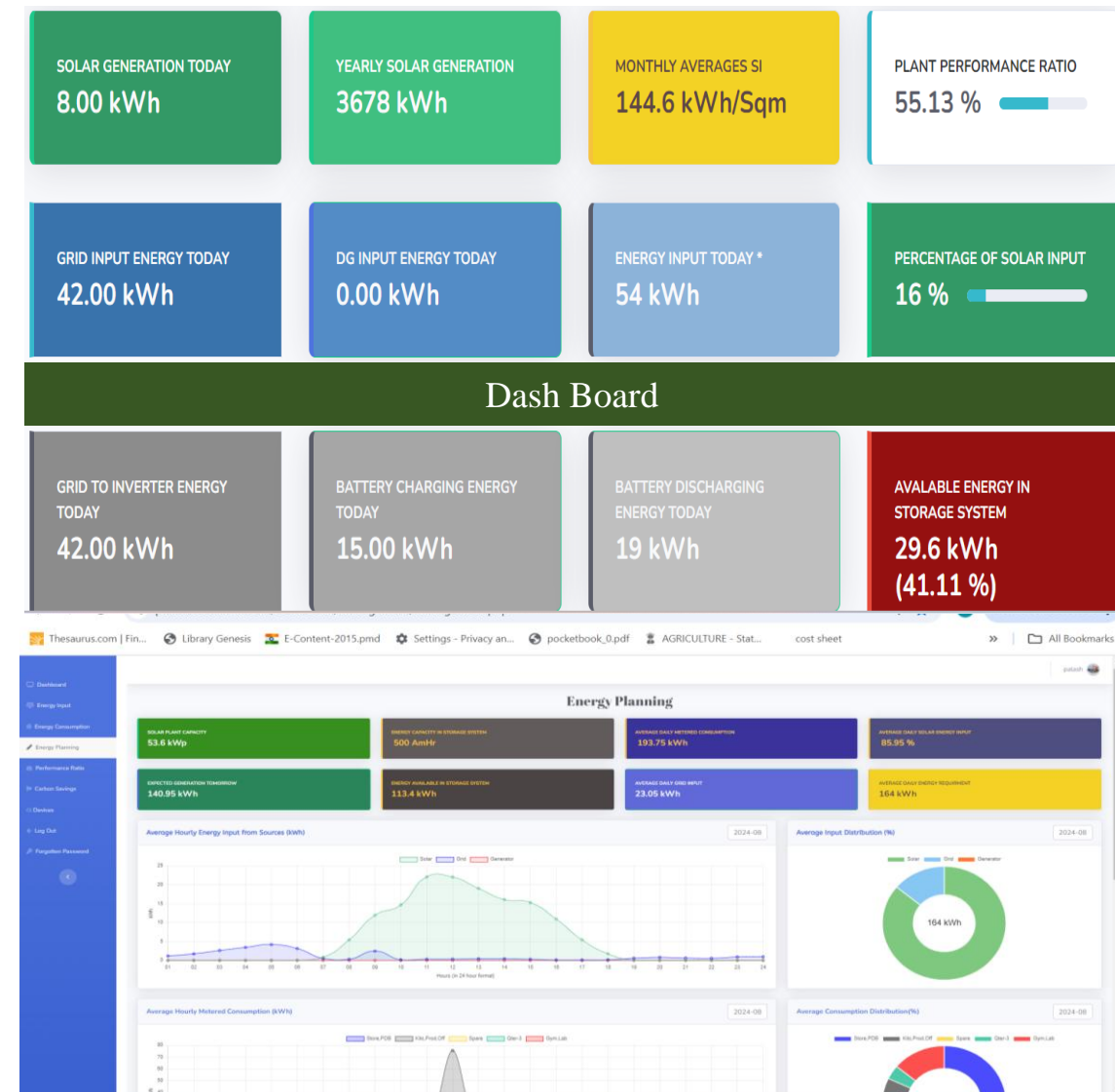


Preparation of ESG Roadmap

- ESG Gap Assessment: Comprehensive evaluation of current ESG practices against industry standards
- Materiality Assessment: Identification and prioritization of key ESG issues relevant to the business and stakeholders
- Strategic Roadmap Development: Creation of a tailored ESG roadmap with specific initiatives, timelines, and measurable goals

Features of our proprietary Energy Analytics Dashboard

- ❑ **Real-Time Data Monitoring:** Provides live updates on energy consumption and performance metrics.
- ❑ **Interactive Data Visualization:** Utilizes charts and graphs for easy interpretation of energy data trends.
- ❑ **Customizable Reporting Tools:** Allows users to generate tailored reports based on specific metrics and timeframes.
- ❑ **Benchmarking Capabilities:** Compares energy performance against industry standards and historical data.
- ❑ **Alerts and Notifications:** Sends real-time alerts for anomalies or inefficiencies in energy usage.
- ❑ **Predictive Analytics:** Uses historical data to forecast future energy needs and identify potential savings.
- ❑ **Integration with IoT Devices:** Connects with smart devices for enhanced data collection and management capabilities.



Energy Consulting: Successful Projects

- ❑ **Palash Blossom Estate:** Established a solar power plant with energy analytics to monitor energy usage and identify anomalies.
- ❑ **NPTI Faridabad:** Collaborated with NTPC School of Business to design a cutting-edge hydropower training facility.
- ❑ **Estimation of Solar Potential:** Partnered with NTPC School of Business on an IFC-sponsored project to evaluate rooftop solar and battery storage potential for off-grid MSMEs in Bihar and Uttar Pradesh.
- ❑ **Floating Solar Project:** Worked with NTPC School of Business to assess the feasibility of a floating solar power plant at Umrangso Reservoir, Assam.



Team



Rabin Roy
CEO and Founder
B.Tech, and MBA (IIT KGP)
Experience: More than 20 years



Avijit Jana
Director
B.E (JU), M.Tech (ISI), MBA (IIT KGP)
Experience: More than 25 years



Jyotirindu Chatterjee
Director
B.E (JU)
Experience: More than 25 years



Sarnali Roy
BD Consultant (Sustainable Actions)
M.Sc. Anthropology (Calcutta University)
Experience: 4 years



Poushali Ghosh Das
Admin and HR Manager
M.B.A
Experience: 7 years



Debarup Bhattacharya
Business Development Manager
PGDM (MDI-M)
Experience: 4 years



Anjan Ghosh
Director
B.Tech (IIT KGP), MBA (XLRI)
Experience : About 40 years



Debashish Mukhopadhyay
Director
B.E (Electrical) – JU
Experience: About 50 years