

Variable Livelihood Program Based Micro-Economic Centre for Empowering Rural Women in Jharkhand

1. Introduction

Variable Livelihood Program based Micro Economic Centre is a concept of incorporating variable need and variable opportunities in villages. This is a model where the economic activities are listed and then develop a basic economic centre where a randomised need identification and subsequent implementation of the same will happen. The centre will run through the solar energy and the centre will be owned by the villagers only. The following basic premises of the centre are given below:

1. Centre will have variable economic activities and the activities will be flexible to address the seasonal opportunities.
2. The centre will employ 100% women of a village, within 5 years.
3. The centre will not be creating job for 365 days for a single woman but enough days for her to develop an economic wellbeing.
4. The centre will be owned by the village women only.
5. The centre will be sustainable through the economic activities and for the expansion it shall attract the developmental fund.

The development of a micro economic centre is a gradual process. The model of the development is given below.

- **Stage1:** Listing of all the micro economic activities that could be feasible in a village economy.
- **Stage2:** Randomized selection of economic activities based on the suitability to establish the basic economic centre.
- **Stage3:** Expansion of the economic centre to make sure 100% employment of women and expansion of economic activities.
- **Stage4:** Multiplication or replicate the model as a sustainable model and integrate with SRLM with government.

In the current endeavour, the following stakeholder's participation are anticipated.

1. Villagers
2. Funding Agency
3. Technical and Implementing Agency

Sustiknow Advisory Private Limited has developed Solar Energy supported various technological solutions to develop livelihood opportunities. It has also been instrumental in developing and designing different models for developing livelihood programs. Thus, the Sustiknow would like to play the role of the technical and implementing agency in pilot project that may be taken by GIZ as a funding agency in our proposed areas of cold pressed mechanized organic oil production, welding, butter production and stitching.

2. Background and rationale for selection of Jharkhand.

Rural women in Jharkhand face numerous socio-economic challenges, including limited access to resources, job opportunities, and education. Many families remain trapped in poverty due to traditional livelihoods that often fail to provide adequate income. The lack of reliable electricity exacerbates these challenges, hindering the growth of small-scale enterprises and limiting skill development opportunities.

By integrating solar energy into these enterprises, we have a revolutionary opportunity to empower women. Establishing MECs with solar-powered machines will allow women to engage in entrepreneurial activities, gain valuable skills, and produce high-quality products, thereby improving their earning potential while promoting environmental sustainability. Our initiative aims to foster gender equality, reduce reliance on fossil fuels, and advance economic growth for rural women.

3. Circle of opportunities in a village economy



The above-mentioned list is non exhaustive.

4. Development of a Basic Micro Economic Centre

The micro economic center we are proposing is the basic micro economic center at Jharkhand. This center will have the following technological interventions:

1. **Cold Pressed Mechanized Organic Oil Producing Centre**
2. **Welding Centre**
3. **Butter Producing Centre**
4. **Limited Capacity Stitching Centre**

The entire center will be operated by 20 kWp Solar Plant with a minimum support of Battery so that it can operate 8 hours in a day.

5. Electrical Load Analysis

Items	Quantity	Electrical Requirement in W	Running Hours	Energy Requirement in kWh
Oil Pressing @ 1.5 HP @ 100 Litre Per day	1	1125	8	9000
Welding Machine and Equipment	1	4800	4	19200
Butter Producing Centre	2	1500	8	24000
Stitching	10	90	12	10800
Total Electrical Load				63000
Generation from Solar Plant per day per kWp				3.2
Solar Plant Size in kWp				20

6. Project Components

■ Phase 1: Planning and Preparation

- Conducting site assessments and finalizing locations.
- Creating thorough project plans that include schedules and budgets.
- Procurement of necessary equipment and solar infrastructure.

■ Phase 2: Infrastructure Setup

- Installation of solar energy systems.
- Setting up the MEC.
- Procurement and installation of mechanized oil pressing machine, welding machine, butter churning machine and stitching machines.

Sustiknow Advisory Private Limited

Regd. Office: 369, 1st Floor, Santi Pally, Kasba, Kolkata-700 107, INDIA

(M): +91 98742 92284 | Email: info@sustiknow.com CIN-U74999WB2018PTC226244 | www.sustinow.com

■ Phase 3: Training and Employment

- Imparting hands on and deep training to make it operational as a sustainable way.
- Train the local people so that they become resources subsequently for the other trainees.

■ Phase 4: Monitoring and Evaluation

- Implementation of monitoring systems and collection of data through dashboard and the development of the dashboard will be the responsibility of Sustiknow.
- Evaluating program outcomes and make necessary adjustments through dashboard on a real time basis.

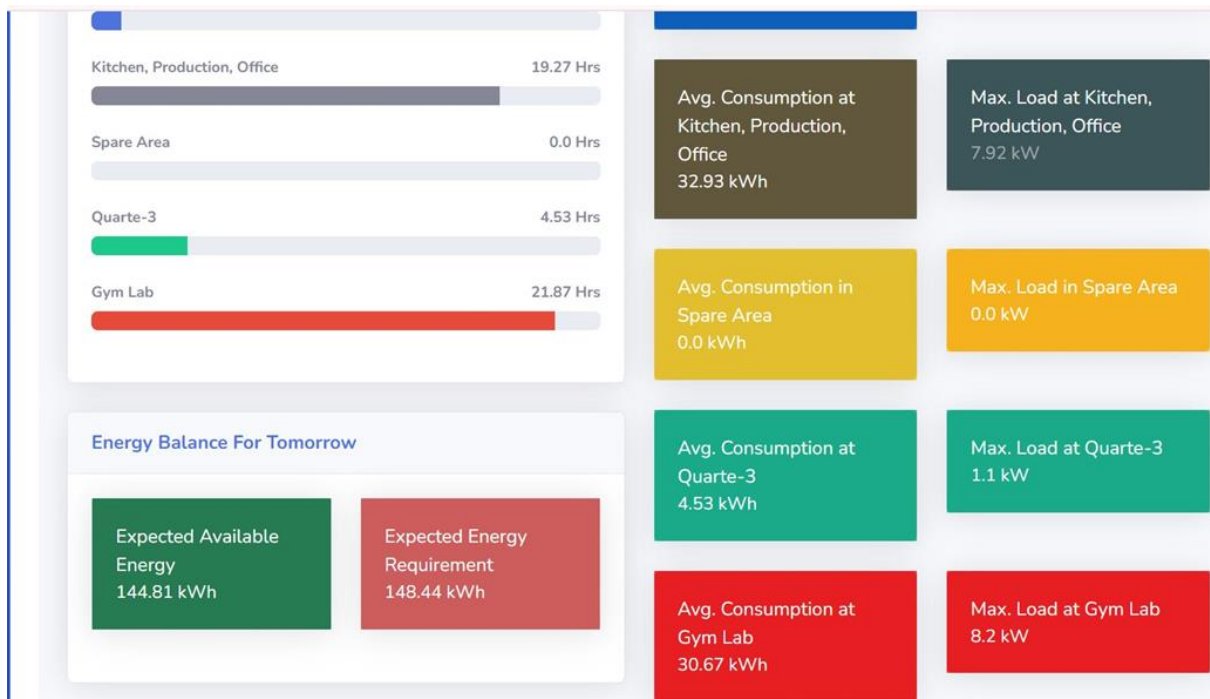
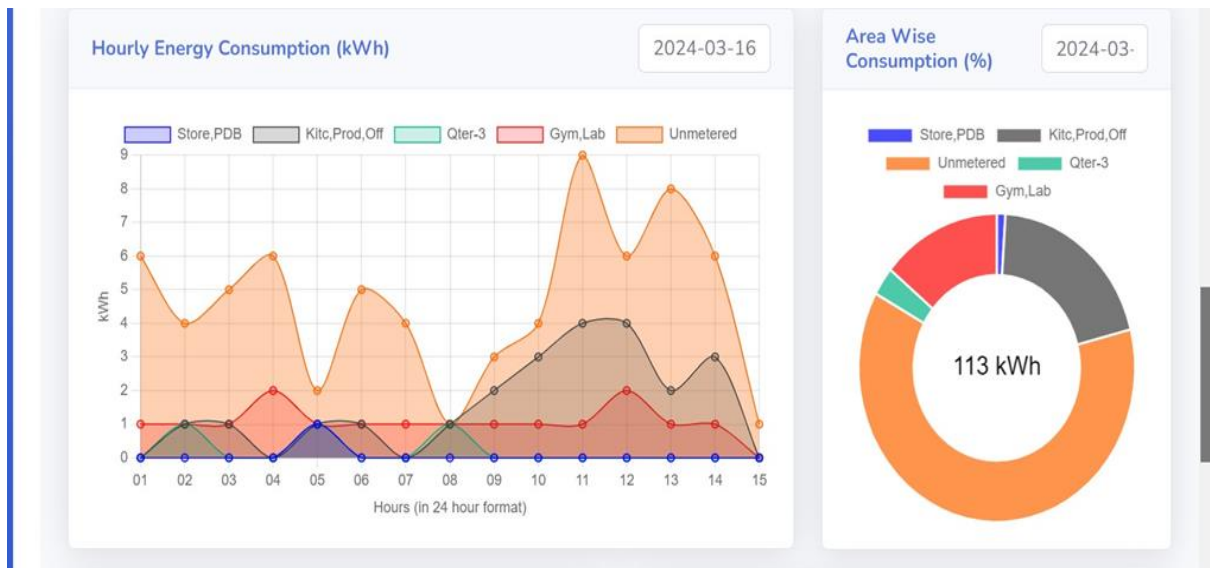
7. Remote Monitoring and Dashboard

To ensure operational efficiency, each MEC will be equipped with a remote monitoring dashboard. This dashboard will track:

- Energy Planning and Generation
- Energy Consumption
- Production Output
- Financial Metrics

This real-time data will enable efficient management and sustainability practices.





These pictures are provided only to explain the dash board. Customized dashboard for each solution will be provided separately.

8. Integrated Solution

The MEC will function as a community hub and will be spacious enough to accommodate all necessary equipment and working spaces. By fostering collaboration and engagement among local stakeholders, we aim to create a holistic support system for the women involved.

Sustiknow Advisory Private Limited

Regd. Office: 369, 1st Floor, Santi Pally, Kasba, Kolkata-700 107, INDIA

(M): +91 98742 92284 | Email: info@sustiknow.com | CIN-U74999WB2018PTC226244 | www.sustinow.com

9. Budget and Financial Plan

10. Expected Outcomes

- **Skill Development:** The entire women of a village will be able to exercise their skills.
- **Income Improvement:** Increase earning potential through direct employment at that micro economic center and entrepreneurship opportunities.
- **Sustainable Development:** The project envisages to foster an economic condition which is scalable and sustainable. Since the project is using solar energy, it will have negligible carbon footprint.
- **Community Impact:** Enhance the economic stability and empowerment of rural women, contributing to overall community development.

11. Sustainability and Scalability

Sustainability is a consideration in designing the proposal as the solution is powered by solar energy. Through active participation from local stakeholders and practical training, the project hopes to produce long-term effects. Positive results will be used to promote the initiative's growth to further regions, and depending on how well it works, it may be replicated in other states.

12. Conclusion

The establishment of a solar-powered Micro-Economic Centre represents a transformative opportunity to empower rural women in Jharkhand. By integrating skill development with renewable energy, we aim to foster economic independence and social empowerment. We invite **GIZ** to join us in this impactful venture, working together to create lasting change for

future generations. Your support can help us making this vision a reality, promoting prosperity and developing rural communities.

Thank you for considering this proposal. We look forward to the opportunity to collaborate on this life-changing initiative.